



**higher education
& training**

Department:
Higher Education and Training
REPUBLIC OF SOUTH AFRICA

MARKING GUIDELINE

NATIONAL CERTIFICATE

PLATING AND STRUCTURAL STEEL DRAWING N1

27 July 2021

This marking guideline consists of 9 pages.

QUESTION 1: SQUARE PYRAMID

1.1	Front view	(3)
1.2	Completed top view	(3)
1.3	Pattern of pyramid	(6)
	Scale	(1)
	Accuracy	(1)
	Neatness	(1)
		[15]

QUESTION 2: RIGHT Y-PIECE

2.1	Front view without joint lines of segments	(5)
2.2	Joint lines of the segments of the Y-piece	(3)
2.3	Pattern of segment A	(3)
	Pattern of segment B	(6)
	Scale	(1)
	Accuracy	(1)
	Neatness	(1)
		[20]

QUESTION 3: CONE INTERSECTION

3.1	Front view without the line of intersection	(4)
3.2	Line of intersection in the front view	(2)
	Pattern of cone	(6)
	Scale	(1)
	Accuracy	(1)
	Neatness	(1)
		[15]

QUESTION 4: RECTANGULAR PYRAMID

4.1	Front view	(2)
4.2	Completed top view	(3)
4.3	True shape of view on arrow A	(6)
	Symbol	(1)
	Scale	(1)
	Accuracy	(1)
	Neatness	(1)
		[15]

QUESTION 5: 45° LOBSTER-BACK BEND

5.1	Front view	(5)
5.2	Pattern of the middle segment	(7)
	Scale	(1)
	Accuracy	(1)
	Neatness	(1)
		[15]

QUESTION 6: RECTANGLE-TO-ROUND

6.1	Front view	(2)
	Top view	(5)
6.2	Pattern of transition piece	(10)
	Scale	(1)
	Accuracy	(1)
	Neatness	(1)
		[20]

TOTAL: 100

QUESTION 1

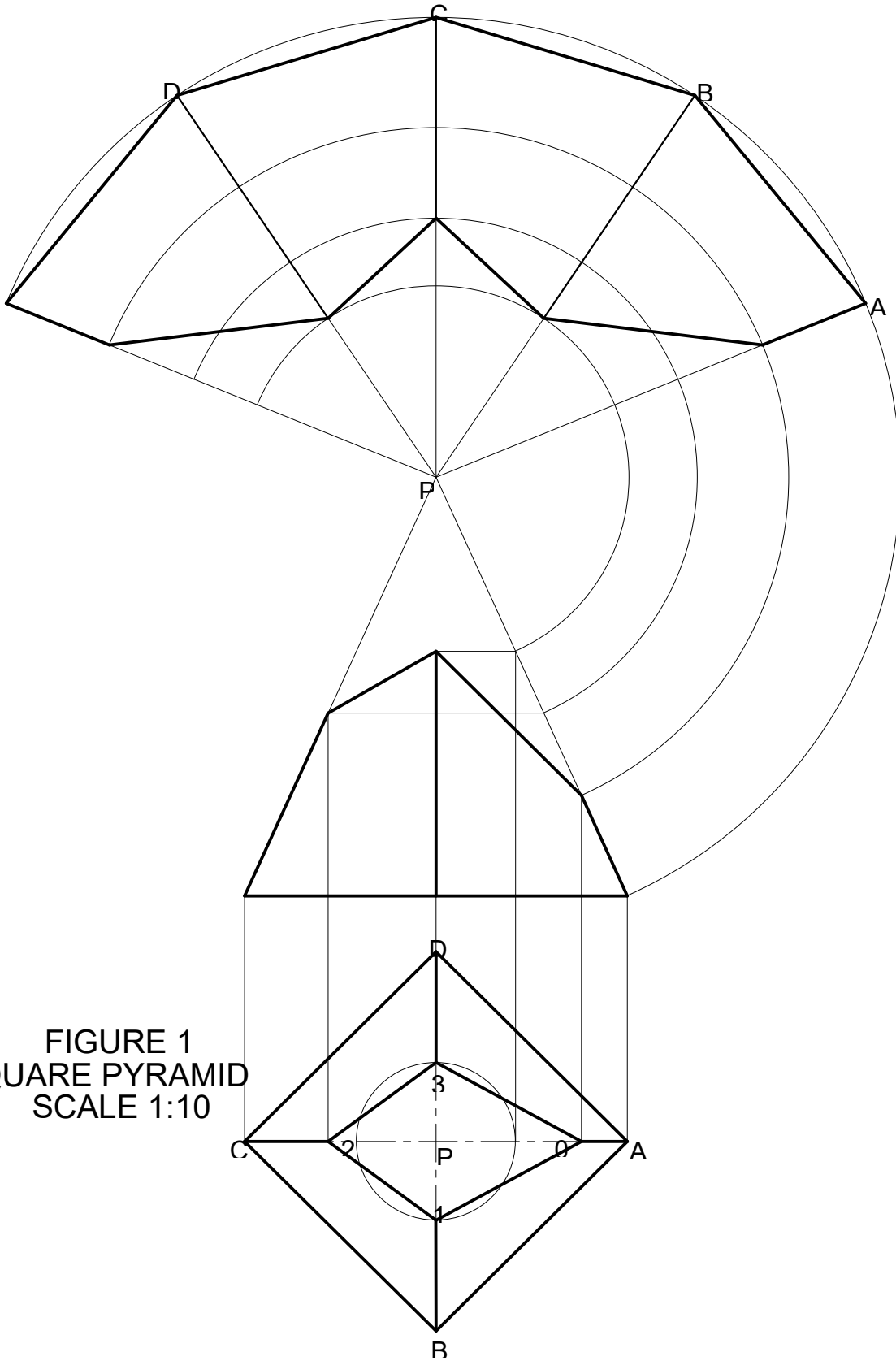


FIGURE 1
SQUARE PYRAMID
SCALE 1:10

QUESTION 2

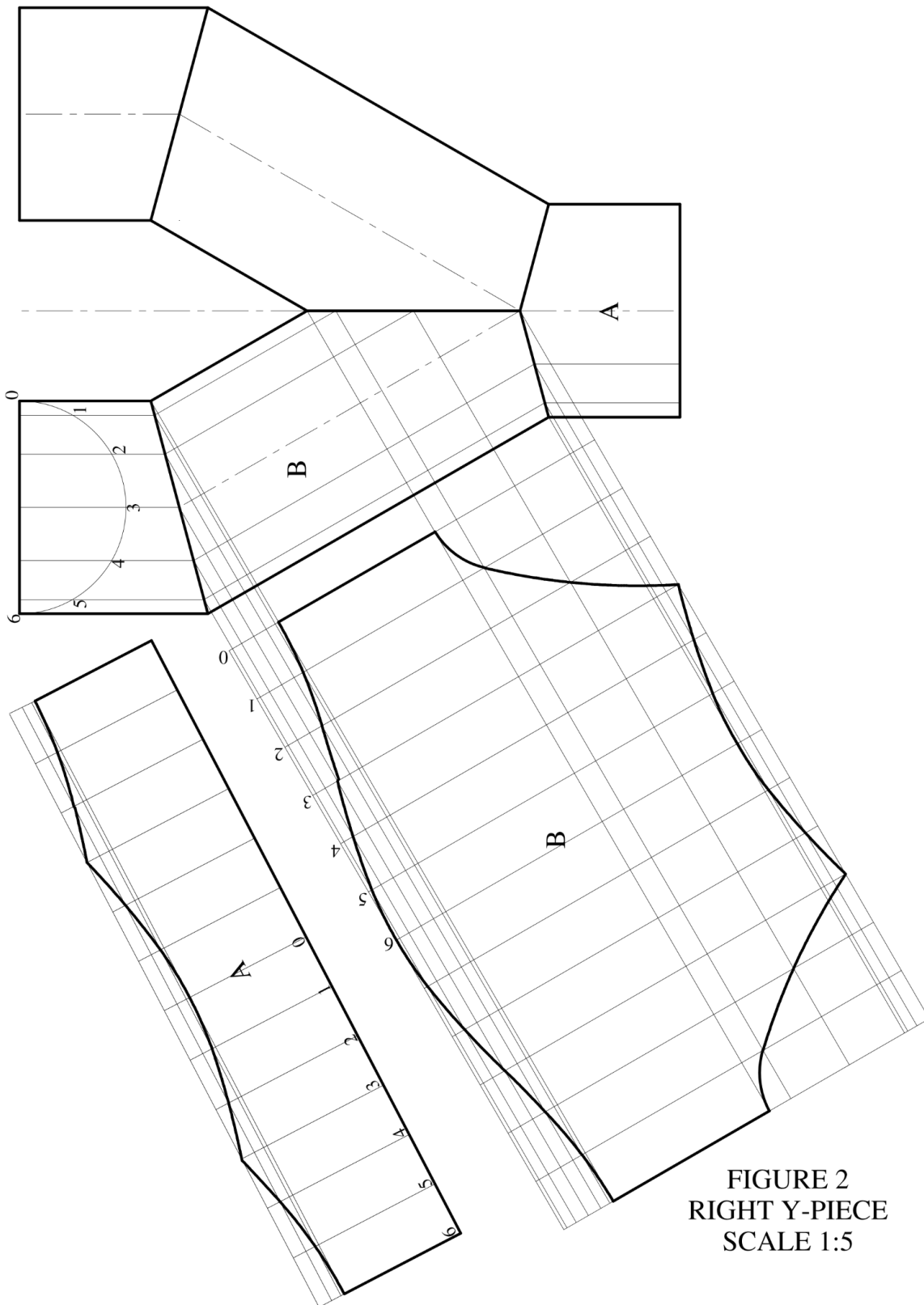


FIGURE 2
RIGHT Y-PIECE
SCALE 1:5

QUESTION 3

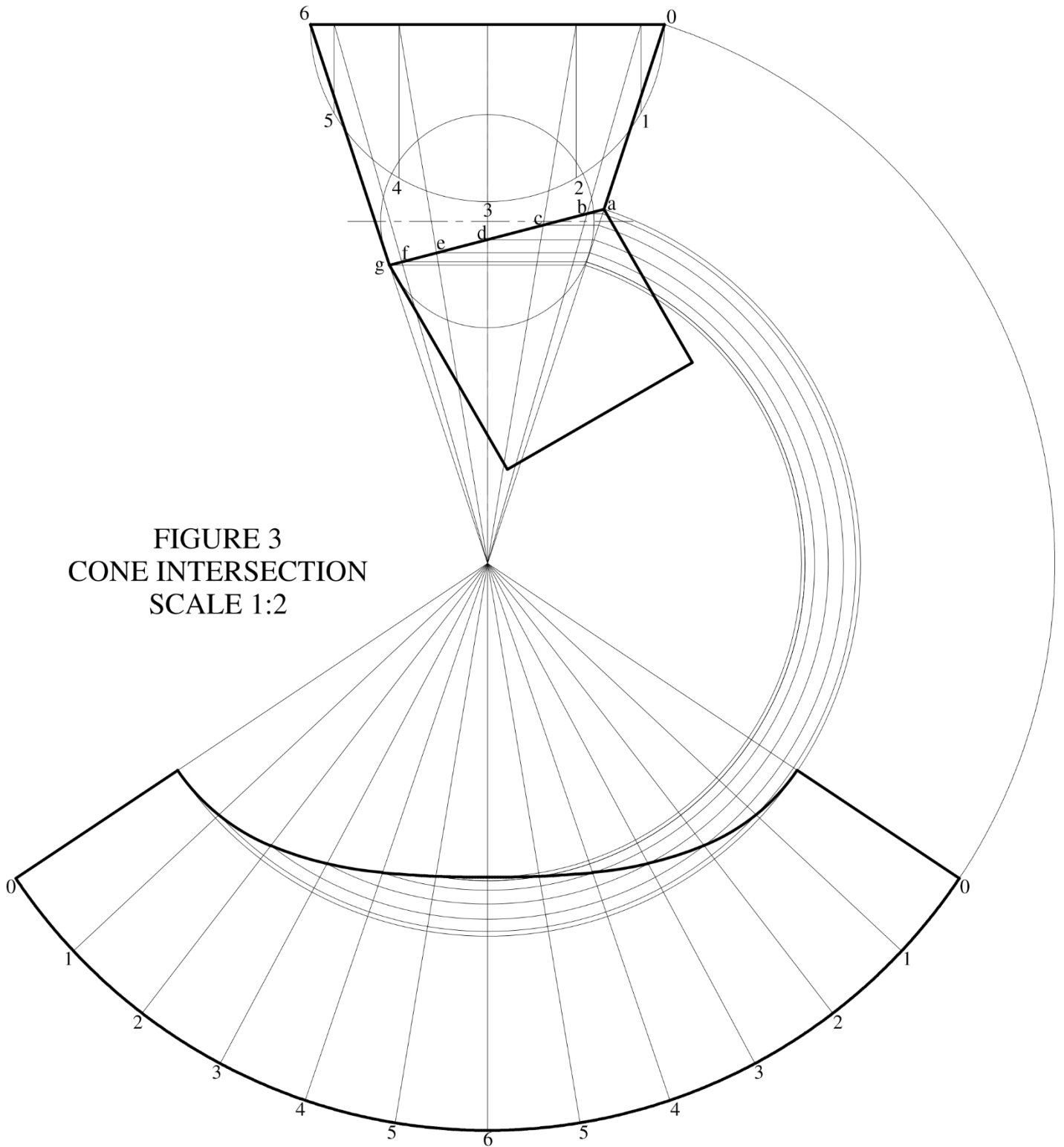


FIGURE 3
CONE INTERSECTION
SCALE 1:2

QUESTION 4

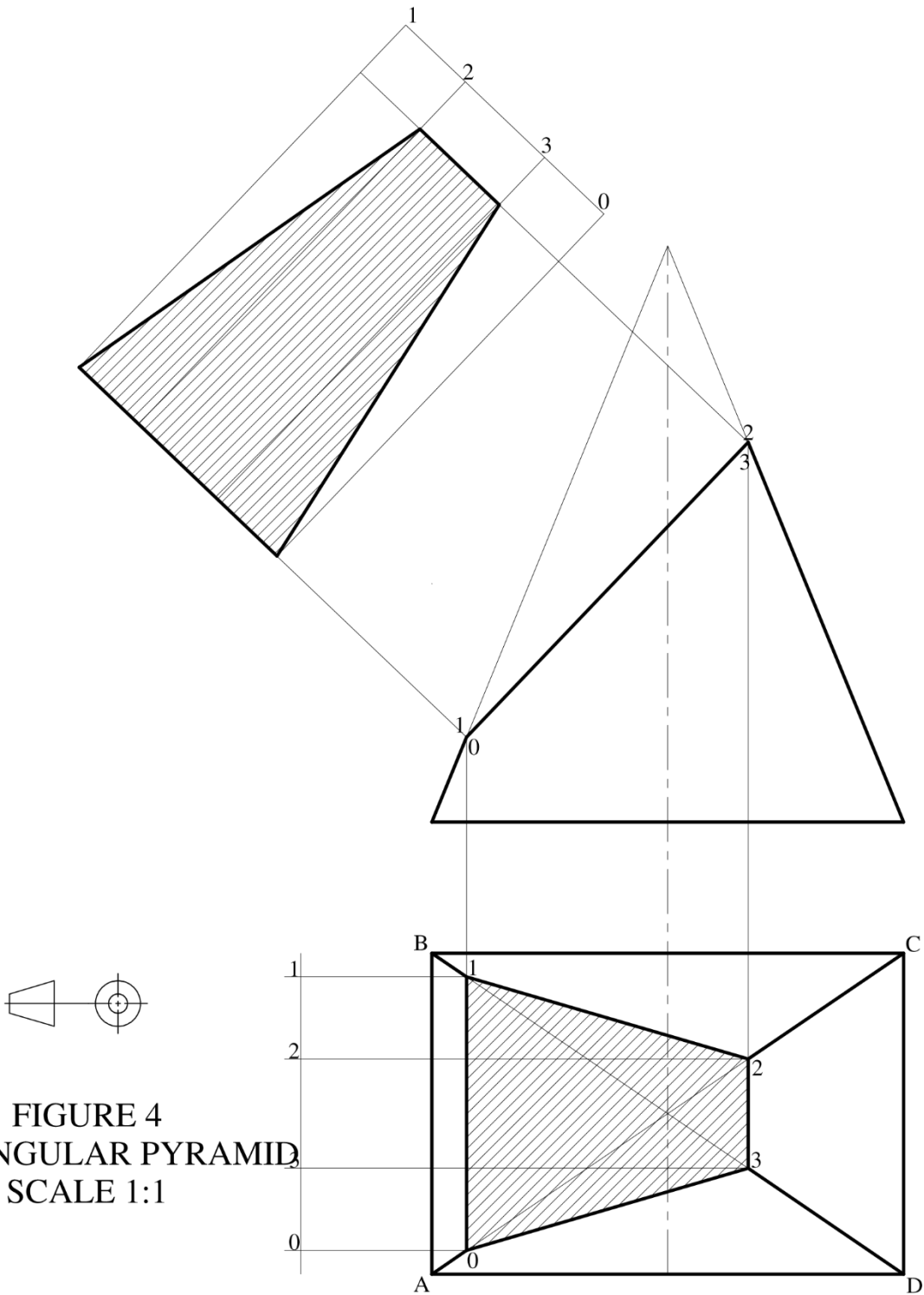


FIGURE 4
RECTANGULAR PYRAMID
SCALE 1:1

QUESTION 5

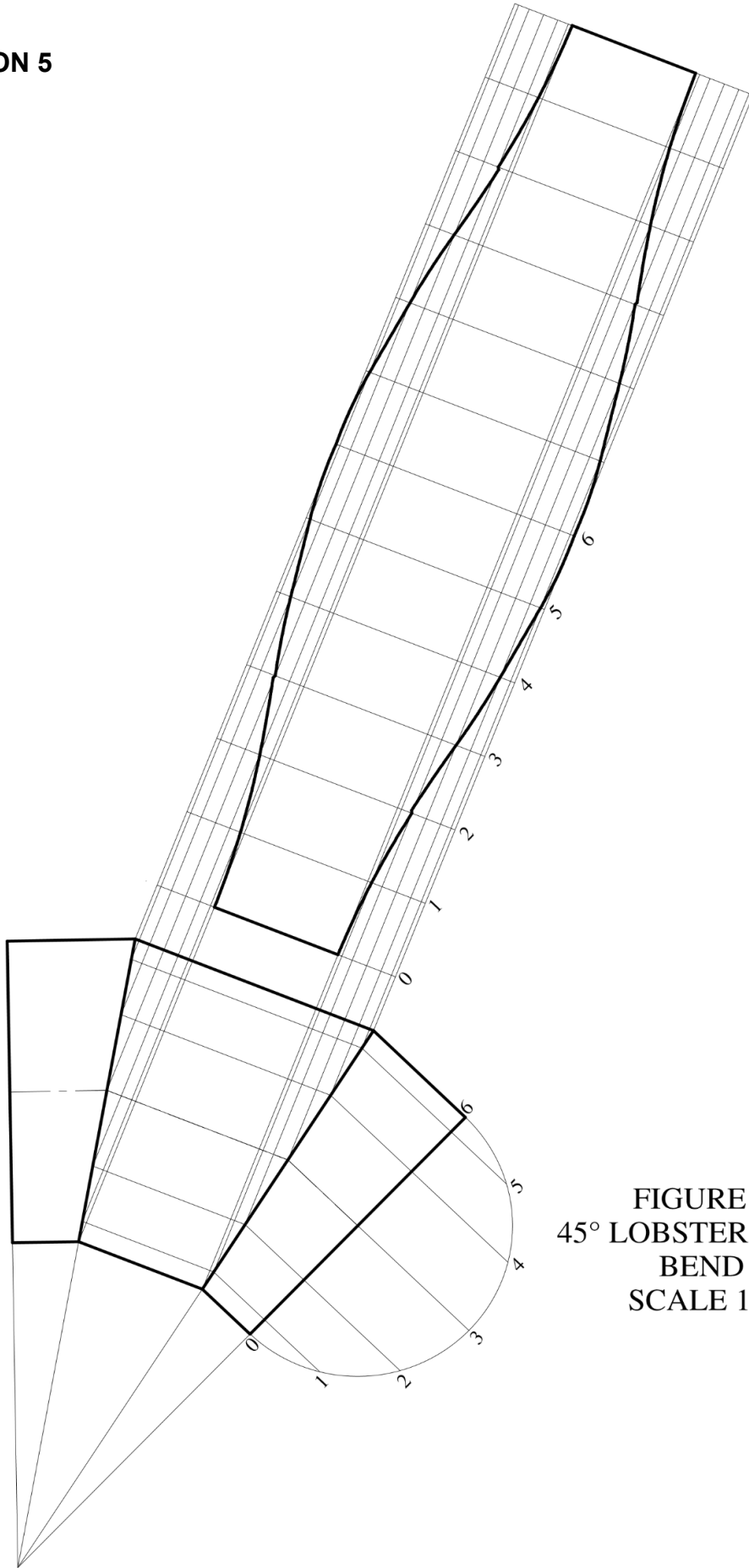


FIGURE 5
45° LOBSTER-BACK
BEND
SCALE 1:5

QUESTION 6

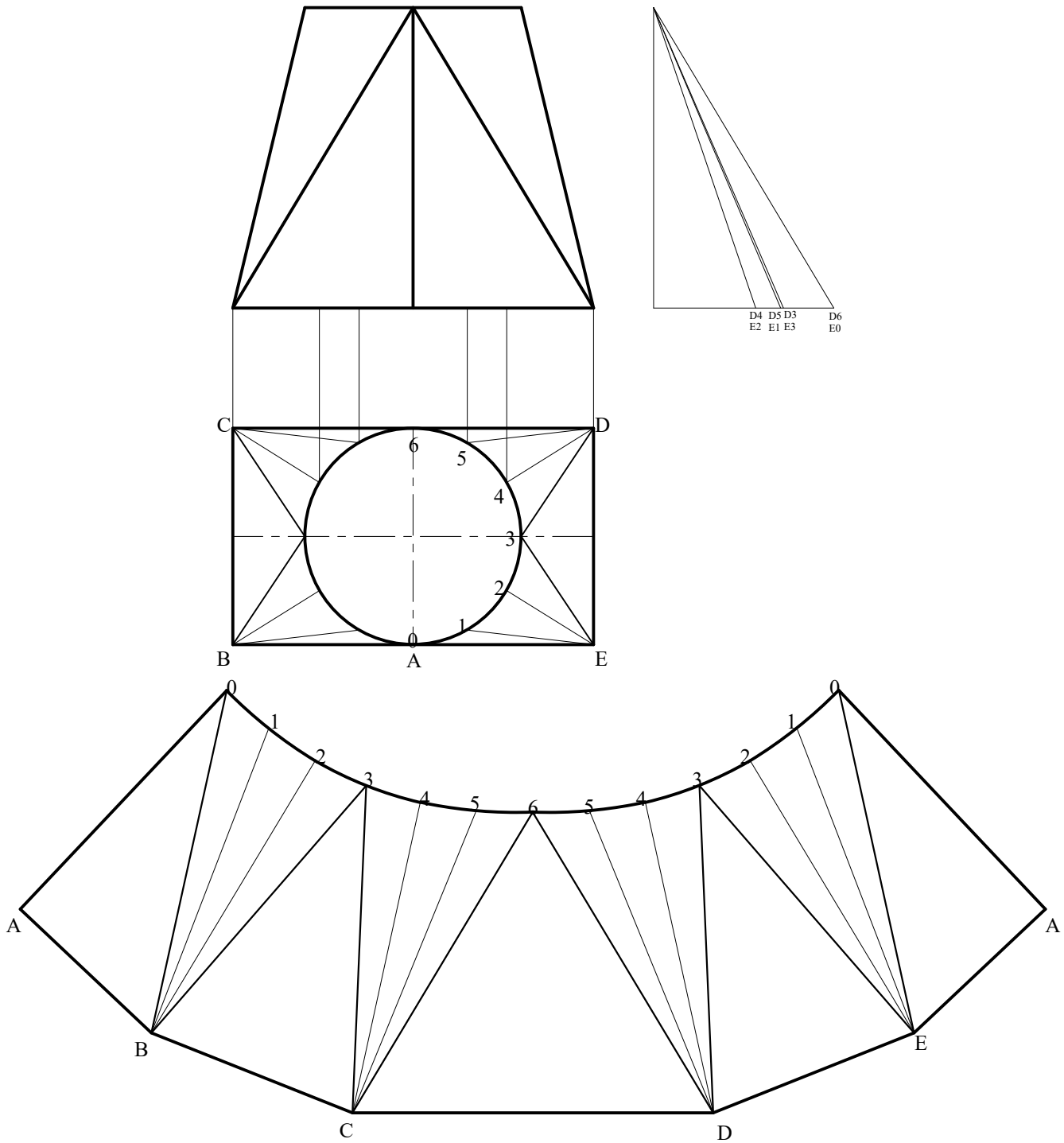


FIGURE 6
RECTANGLE-TO-ROUND
SCALE 1:10